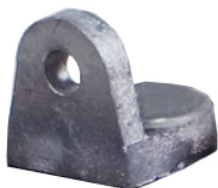


FLOODED DEEP CYCLE BATTERY

3ELG 15P



Series	4000	Warranty	1 Year
Volts	6	Design	903
Cells	3	Plates/Cell	15
Terminal Type	LT		
Included Hardware	S/S Hex Cap Screw, Nut, Lock & Flat Washer		
Size & Thread	5/16"-18		
Cables	Optional: 19" 4/0 interconnect cable		

Charge

Charge Voltage Range	2.45-2.5 V/cell @ 25°C (77°F)
Float Voltage Range	2.25 V/cell @ 25°C (77°F)
Recommended Charge Current	45 A
Maximum Charge Current	75 A
Self-Discharge Rate	5%-10% per month at 25°C (77°F)

Capacity

Cold Crank Amps (CCA) 0°F / -18°C	910
Marine Crank Amps (MCA) 32°F / 0°C	1137
Reserve Capacity (RC @ 25A)	755 Minutes
Reserve Capacity (RC @ 75A)	198 Minutes

Capacity Affect by Temperature	40°C (104°F)	25°C (77°F)	0°C (32°F)	-15°C (5°F)
	105%	100%	75%	50%

Hour Rate	Capacity / AMP Hour	Current / AMPs
@ 100 Hour Rate	449 AH	4.49 A
@ 72 Hour Rate	437 AH	6.07 A
@ 50 Hour Rate	421 AH	8.42 A
@ 20 Hour Rate	390 AH	19.50 A
@ 15 Hour Rate	367 AH	24.44 A
@ 10 Hour Rate	351 AH	35.10 A
@ 8 Hour Rate	335 AH	41.93 A
@ 5 Hour Rate	312 AH	62.40 A
@ 1 Hour Rate	183 AH	183.30 A

Ampere hour capacity ratings based on specific gravity of 1.280 at 27°C (80°F). Reduce capacities 5% for specific gravity of 1.265 and 10% for 1.250.

Specifications

Weight	56.5 kg	125 lbs
Length	286 mm	11.25"
Width	176 mm	6.94"
Height Incl. Term.	425.5 mm	16.75"

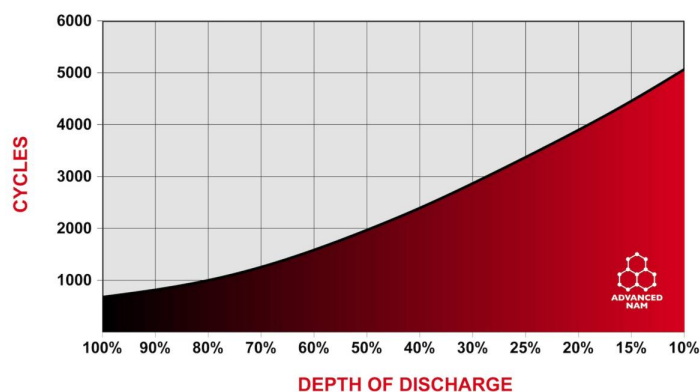
Product measurements & weights are calculated based on sample data. Individual specifications are subject to vary due to the manufacturing process & battery components.

Electrolyte Reserve	51 mm	2"
Handles	Integrated Top Mount	

6-Volt, adaptable to 4-Volt

- Plastics are UL94 HB (UL94-V2 available)
- Plastics are impact copolymer rated to ASTM D256, D5420
- Vented design with integral flame arrestor vent caps

Cycle Life vs. Depth of Discharge



Voltage vs. Depth of Discharge

DISCHARGE	0%	25%	50%	75%	100%
20 HR AH RATE	2.10 V	2.07 V	2.00 V	1.92 V	1.75 V
10 HR AH RATE	2.10 V	2.06 V	1.98 V	1.89 V	1.75 V
3 HR AH RATE	2.10 V	2.03 V	1.95 V	1.86 V	1.75 V
1 HR AH RATE	2.10 V	2.01 V	1.93 V	1.84 V	1.75 V

Detailed Illustration

